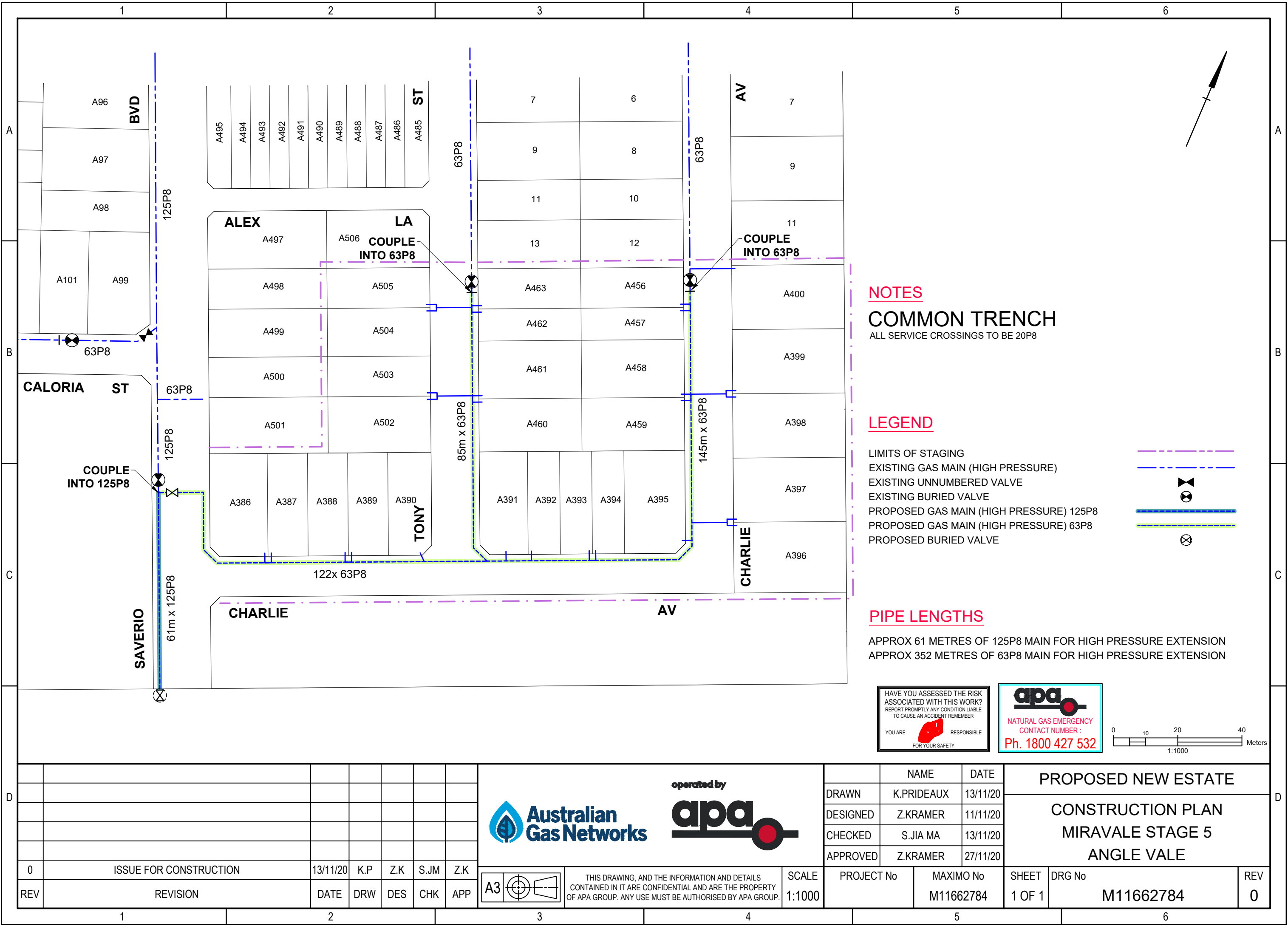


G:\P_EVAS\CAPITAL WORKS\NEW ESTATES\2020 New Estates\M11662784_Miravale St 5 Angle Vale.dwg;A3_CutePDF Writer;APA-General.ctb;Prideaux, Koko;27/11/2020 9:57:50 AM



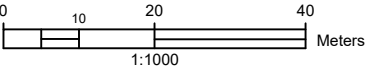
NOTES
COMMON TRENCH
ALL SERVICE CROSSINGS TO BE 20P8



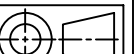
LEGEND

- LIMITS OF STAGING
- EXISTING GAS MAIN (HIGH PRESSURE)
- EXISTING UNNUMBERED VALVE
- EXISTING BURIED VALVE
- PROPOSED GAS MAIN (HIGH PRESSURE) 125P8
- PROPOSED GAS MAIN (HIGH PRESSURE) 63P8
- PROPOSED BURIED VALVE

PIPE LENGTHS

- APPROX 61 METRES OF 125P8 MAIN FOR HIGH PRESSURE EXTENSION
- APPROX 352 METRES OF 63P8 MAIN FOR HIGH PRESSURE EXTENSION



							<div><div></div><div><div>operated by</div><div></div></div></div>		NAME	DATE	PROPOSED NEW ESTATE		
								DRAWN	K.PRIDEAUX	13/11/20	CONSTRUCTION PLAN MIRAVALE STAGE 5 ANGLE VALE		
								DESIGNED	Z.KRAMER	11/11/20			
								CHECKED	S.JIA MA	13/11/20			
								APPROVED	Z.KRAMER	27/11/20			
0	ISSUE FOR CONSTRUCTION	13/11/20	K.P	Z.K	S.JM	Z.K	<div><div></div><div>THIS DRAWING, AND THE INFORMATION AND DETAILS CONTAINED IN IT ARE CONFIDENTIAL AND ARE THE PROPERTY OF APA GROUP. ANY USE MUST BE AUTHORISED BY APA GROUP.</div></div>	SCALE	PROJECT No	MAXIMO No	SHEET	DRG No	REV
REV	REVISION	DATE	DRW	DES	CHK	APP		1:1000			1 OF 1	M11662784	0